

2012

7th Susquehanna River Symposium Program

Bucknell Center for Sustainability and the Environment

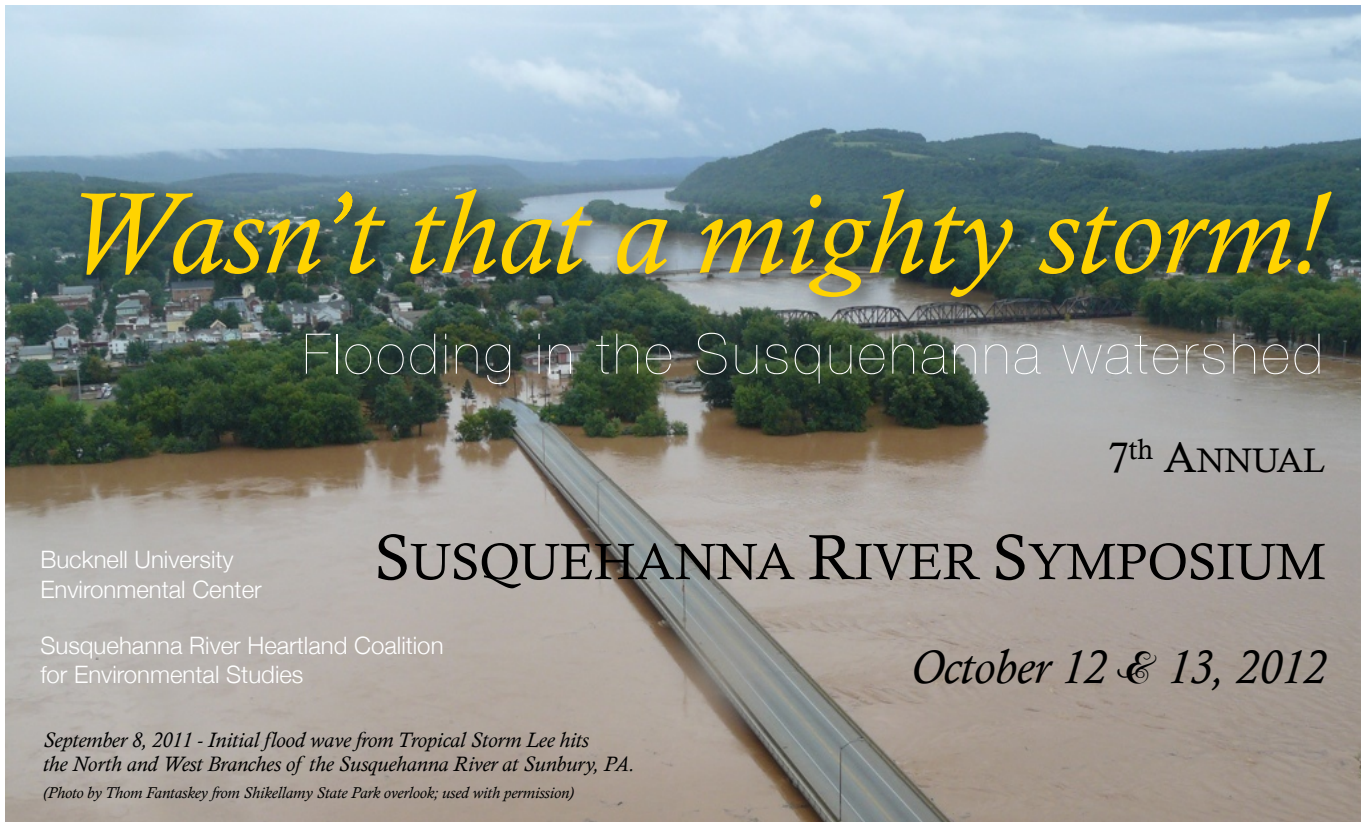
Follow this and additional works at: <https://digitalcommons.bucknell.edu/bcse-river-symposium-pubs>

Recommended Citation

Bucknell Center for Sustainability and the Environment, "7th Susquehanna River Symposium Program" (2012). *Susquehanna River Symposium -- Proceedings*. 7.
<https://digitalcommons.bucknell.edu/bcse-river-symposium-pubs/7>

This Program (Publication) is brought to you for free and open access by the Events at Bucknell Digital Commons. It has been accepted for inclusion in Susquehanna River Symposium -- Proceedings by an authorized administrator of Bucknell Digital Commons. For more information, please contact dcadmin@bucknell.edu.

7TH ANNUAL SUSQUEHANNA RIVER SYMPOSIUM



Wasn't that a mighty storm!

Flooding in the Susquehanna watershed

7th ANNUAL

SUSQUEHANNA RIVER SYMPOSIUM

October 12 & 13, 2012

Bucknell University
Environmental Center

Susquehanna River Heartland Coalition
for Environmental Studies

*September 8, 2011 - Initial flood wave from Tropical Storm Lee hits the North and West Branches of the Susquehanna River at Sunbury, PA.
(Photo by Thom Fantasky from Shikellamy State Park overlook; used with permission)*

STUDENT RESEARCH POSTERS & EXHIBITS

Friday evening features student research posters by students and faculty from universities conducting research in the Susquehanna watershed. Exhibits from the *Susquehanna River Basin Commission*, *DEP*, *PennDOT*, *NOAA*, *DCNR*, *Sea Grant Program*, and local watershed groups will be on display from 8:30 to 10:00 pm.

REGISTRATION

Registration is NOT required for this event. Welcome tables will be located at the entrance to the Terrace Room and Center Room (Rm. 256) in the Elaine Langone Center. Students will be present to help answer questions on Friday from 4:30 to 6:45 pm and Saturday from 7:30 to 9:00 am. They will provide everyone name tags and a folder containing a copy of symposium program and other materials.

COST

All events are **FREE** and **OPEN TO THE PUBLIC**.

MEALS

Meals are not provided for the public, but a variety of lunch or dinner entrees are available at the university's food court in the Elaine Langone Center (1st floor) or at a restaurant in downtown Lewisburg.

Meals will be provided to invited guests, symposium speakers, and students/faculty who are presenting research posters. .

DIRECTIONS TO CAMPUS PARKING & LODGING

Directions to Bucknell university, maps of campus and symposium event locations, as well as parking and lodging information can be viewed and downloaded from the symposium website:

www.bucknell.edu/RiverSymposium

Friday's Schedule

*Terrace Room, Elaine Langone Center
Bucknell University*

7:00 pm

Opening

Dr. Peter Wilshusen, Executive Director
Bucknell University Environmental Center.

7:10 pm

Welcome

Dr. John C. Brawman
President, Bucknell University*

7:20 pm

"Exploring the watershed through university research and collaborative partnerships"

H.V. "Skip" Wieder, Director
Susquehanna River Heartland Coalition
for Environmental Studies

7:30 pm (Keynote Address)

"Floods, Droughts, and Everything In Between"

Paul Swartz, Executive Director
Susquehanna River Basin Commission

8:00 pm

The Connection to the Chesapeake Bay"

Matthew J. Ehrhart, Pennsylvania Executive Director
Chesapeake Bay Foundation

8:30 - 10:00 pm

Student research posters, scientific exhibits, and evening social.

October 12-13, 2012

Bucknell
UNIVERSITY
ENVIRONMENTAL CENTER

7TH ANNUAL SUSQUEHANNA RIVER SYMPOSIUM

SATURDAY, OCTOBER 13TH

FLOODING IN THE SUSQUEHANNA RIVER

*Terrace Room (Rm. 256)
Elaine Langone Center*

8:00-9:00 am

*Coffee & refreshments
Student research posters*

9:00 am

*Opening comments
Paul Swartz, Executive Director
Susquehanna River Basin Commission*

9:15 am

*Flood Forecasting in the Susquehanna watershed
William Marosi, Chief Hydrologist
Mid Atlantic Flood Forecasting Center
NOAA National Weather Service*

9:45 am

*The Anatomy of Floods: the Epic Floods of Tropical
Storm Lee, September 2011
Mark Roland, Hydrologist
Pennsylvania Water Science Center
U. S. Geological Survey*

10:15 am

*Extreme flood events in the Susquehanna watershed:
Impacts related to erosion and sedimentation
R. Craig Kochel, Professor of Geology
Bucknell University*

10:45 am

*Impact of floods on fish and aquatic life in the
Susquehanna River and its tributaries
Geoff Smith, Susquehanna River Biologist
Pennsylvania Fish and Boat Commission*

11:15 am

Break

11:30 am

*Impact of flooding on roads, bridges, houses, and
other infrastructures - an engineering perspective
T. Jay Cunningham, P.E.
Director of Engineering Design
Pennsylvania Department of Transportation*

12:00 pm

*Impact of Tropical Storm Lee on communities along
the Susquehanna River - an example from
Bloomsburg, PA*

Zabrina Finn, Executive Director
The Women's Center, Inc.
Columbia & Montour Counties

12:30 pm

*Wrap-up
Paul Swartz, Executive Director
Susquehanna River Basin Commission*

1:00 pm

Lunch in Walls Lounge, Elaine Langone Center

1:30 pm

*Panel Discussion
Flood impacts and planning for the future
Moderated by John Dawes, Executive Director
Foundation for Pennsylvania Watersheds*

2:00 pm

*Closing Comments
H.W. "Skip" Wieder*,
Susquehanna Heartland Coalition for Environmental
Studies*

2:15-3:15 pm

*"The Water's Edge"
Profits and policy behind the
rising catastrophe of floods
An award-winning documentary film
by the Flood Safety Project and
Public Entity Risk Institute.
Featuring world-renowned flood expert
Dr. Victor Baker, University of Arizona.*

